

# PLANK-P/U



## DE

LED-Pendelleuchte, rein indirekt (INDIRECT) oder direkt-indirektstrahlend über schwenkbare Spots zur Akzentbeleuchtung (DUAL OPTIC).

Leuchtenkörper aus Aluminium-Strangpress-Profil silbermatt natureloxiert. Optional weitere Farben (s. Oberflächenübersicht).

LED-Konverter wahlweise schaltbar oder dimmbar (1-10V, DALI, Touch-Dim). Werkseitige Konverterprogrammierung ermöglicht unterschiedliche Lichtstromoptionen. Getrennte Steuerung der Spots.

Standard LED-Farbtemperatur 3000K und 4000K. Auf Wunsch 2200K, 2700K, 3500K, 5000K, 6500K. Enge Farbtoleranz MacAdam 3. Farbwiedergabe Ra $\geq$ 80, auf Anfrage Ra $>$ 90 möglich.

Stufenlos höhenverstellbare Seilabhangung zur Parallelmontage mit transparent ummantelter Zuleitung und Baldachin silber.

Lichtstromruckgang auf 90% des Ursprungswertes bei 50000h (L90B10 bei 25°C und max. Medium-Power). 5 Jahre Garantie auf LED-Module und LED-Betriebsgerate.

Beachten Sie die ubersicht `optionale Ausfuhungen

## EN

LED pendant luminaire direct-indirect with spotlights (DUAL OPTIC) or indirect only (INDIRECT).

Luminaire body made of aluminium-profile. Matt silver anodised. On request extensive range of alternative colours (see overview).

LED drivers which can optionally be switched or dimmed (1-10V, DALI, Touch-Dim). Factory programming offers different lumen output level. Separate control of spotlights.

Standard LED colour temperature 3000K and 4000K. On request 2200K, 2700K, 3500K, 5000K, 6500K. MacAdam 3 step binning. Colour rendering CRI $\geq$ 80, CRI $>$ 90 on request.

Height adjustable cord suspension for parallel installation with transparent power supply cable and ceiling rose silver.

90% of initial output for 50000 operating hours (L90B10 at 25°C and max. Medium-Power). 5 year warranty on all LED boards and LED drivers.

Refer to "options" overview

## FR

Luminaire LED suspendu, clairage indirect ou direct et indirect au moyen de spots orientables pour un clairage accentu (OPTIC DUAL).

Corps du luminaire en aluminium extrud, gris mat anodis. Couleurs et surfaces supplementaires en option (voir annexe).

Convertisseur LED au choix: commutable ou graduable (1-10V, DALI, Touch-Dim). Programmation en usine offrant differentes options de flux lumineux. Commande separee des spots.

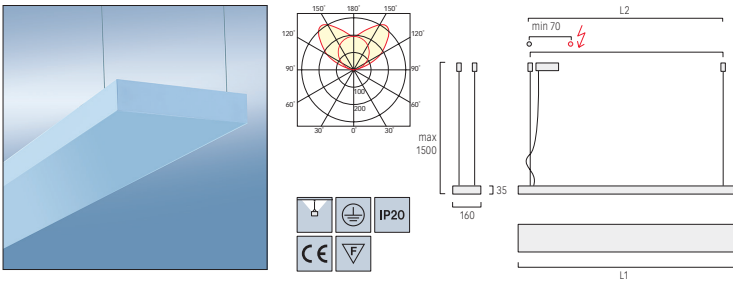
Temperature de couleur LED standard 3000K ou 4000K. Sur demande: 2200K, 2700K, 3500K, 5000K, 6500K (MacAdam 3). Rendu de couleur IRC $\geq$ 80, sur demande IRC $>$ 90.

4 cables de suspension reglables en hauteur pour un montage parallelle avec cable d'alimentation transparent et patere saillie grise.

50 000 heures de fonctionnement avec une utilisation  90% de la puissance (L80B10  25°C et max. Medium-Power). 5 ans de garantie sur tous les modules LED et convertisseurs LED.

Voir les differentes options

PLANK-U / INDIRECT

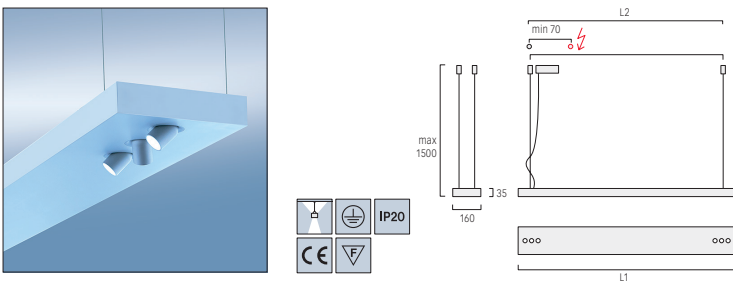


L1	L2	LUMEN/WATT	CODE	KG
LED - MEDIUM POWER				
600	570	2392lm/30W*	KU1UEE-###M-L600-KS	3,2
900	870	3590lm/43W*	KU1UEE-###M-L900-KS	4,2
1200	1170	4785lm/57W*	KU1UEE-###M-L1200-KS	4,9
1500	1470	5980lm/70W*	KU1UEE-###M-L1500-KS	5,6
LED - HIGH POWER				
600	570	3455lm/45W*	KU1UEE-###H-L600-KS	3,2
900	870	5184lm/66W*	KU1UEE-###H-L900-KS	4,2
1200	1170	6911lm/87W*	KU1UEE-###H-L1200-KS	4,9
1500	1470	8640lm/109W*	KU1UEE-###H-L1500-KS	5,6
FLUORESCENT				
1182	1162	T5 2x28/54W	KU1UEE-228/54-KS	3,6
1486	1466	T5 2x35/49W	KU1UEE-235/49-KS	4,1
2362	2342	T5 2x2x28/54W	KU1UEE-2-228/54-KS	6,3
2970	2950	T5 2x2x35/49W	KU1UEE-2-235/49-KS	7,6
3542	3522	T5 3x2x28/54W	KU1UEE-3-228/54-KS	9,8
4454	4434	T5 3x2x35/49W	KU1UEE-3-235/49-KS	11,3

<b>CONTROL</b>	<b>E:</b> NON DIMMABLE, <b>D:</b> DIM 1-10V, <b>L:</b> DIM DALI, <b>H:</b> TOUCH-DIM
<b>LED COLOUR TEMPERATURE ###</b>	<b>830:</b> 3000K, <b>840:</b> 4000K

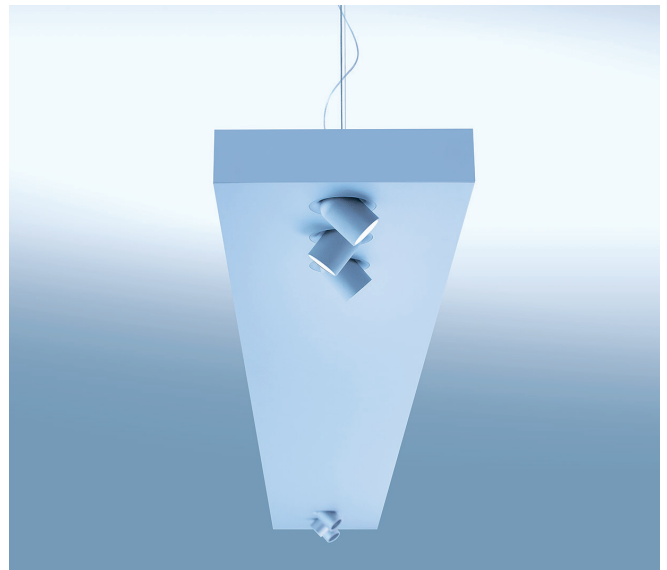
\*Leuchtenlichtstrom bei 4000K | Luminaire luminous flux at 4000K | Flux de luminaire à 4000K

PLANK-P / DUAL OPTIC

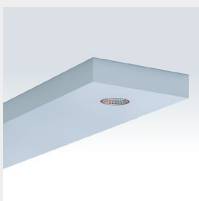


L1	L2	LUMEN/WATT	CODE	KG
2000	1470	3750lm/59W*	KU1UEG-###M-L2000-2x3AC-KS	4,1
<b>CONTROL</b>		<b>E:</b> NON DIMMABLE, <b>D:</b> DIM 1-10V, <b>L:</b> DIM DALI, <b>H:</b> TOUCH-DIM		
<b>LED COLOUR TEMPERATURE ###</b>		<b>830:</b> 3000K, <b>840:</b> 4000K		

\*Leuchtenlichtstrom bei 4000K | Luminaire luminous flux at 4000K | Flux de luminaire à 4000K



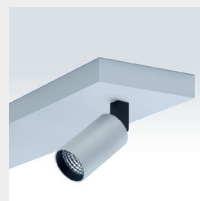
OPTIONAL



SPOTLIGHT TYPE: MR  
MAX. 800LM



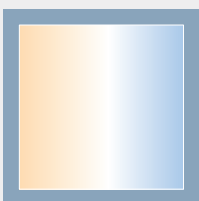
SPOTLIGHT TYPE: AC  
MAX. 500LM



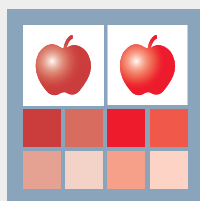
SPOTLIGHT TYPE: RX3  
MAX. 1300LM



SPOTLIGHT TYPE: RX5  
MAX. 4000LM



ALTERNATIVE COLOUR TEMPERATURES:  
2200K/ 3500K/ 6500K



LEDS WITH HIGHER CRI  
Ra>90



FURTHER SELECTED SURFACE DESIGNS:  
SEE PAGE 15



BLUETOOTH MODULE FOR WIRELESS CONTROL



EMERGENCY MODULE WITH 3 HOUR BATTERY



MULTISENSOR FOR DAYLIGHT AND PRESENCE CONTROL