

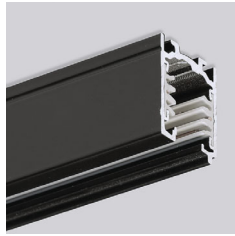
# 3-PHASE TRACKS



**DE** 3-Phasen-Stromschienen für Einbau-, Anbau- oder Pendelmontage. Kompatibel mit allen Leuchten mit GLOBAL-Adaptern. Oberfläche weiß oder schwarz lackiert. Wahlweise in Ausführung schaltbar oder stufenlos dimmbar (DALI). Maximale Systemflexibilität durch umfangreiches Standardsortiment an Verbindern, Abhängungen sowie Zuschnitt nach Maß. Auf Anfrage: gebogene Elemente mit Mindestradius 2500mm.

**EN** 3-phase tracks for recessed, surface or pendant mounting. Compatible with all luminaires with GLOBAL adapters. Surface white or black coated. Optionally switchable or dimmable version (DALI). Maximum system flexibility due to extensive standard range of connectors, suspensions and custom-made lengths. On request: bent elements with a minimum radius of 2500mm.

**FR** Rails triphasés pour un montage encastré, apparent ou suspendu. Compatible avec tous les luminaires équipés d'adaptateurs GLOBAL. Surface laquée blanc ou noir. Au choix ON/OFF ou gradable (DALI). Flexibilité maximale grâce à une vaste gamme de connecteurs, de suspensions et de longueurs sur mesure. Sur demande: éléments cintrés avec un rayon minimum de 2500mm.



**TRACK SURFACE (for Global Adaptor):**

X-HV-TRACK-L2000-E-A-B [ON/OFF, BLACK]  
 X-HV-TRACK-L2000-E-A-W [ON/OFF, WHITE]  
 X-HV-TRACK-L2000-L-A-B [DALI, BLACK]  
 X-HV-TRACK-L2000-L-A-W [DALI, WHITE]



**TRACK RECESSED (for Global Adaptor):**

X-HV-TRACK-L2000-E-L-B [ON/OFF, BLACK]  
 X-HV-TRACK-L2000-E-L-W [ON/OFF, WHITE]  
 X-HV-TRACK-L2000-L-L-B [DALI, BLACK]  
 X-HV-TRACK-L2000-L-L-W [DALI, WHITE]



**END CAP SURFACE:**

X-HV-CAP-A-B [SURFACE BLACK]  
 X-HV-CAP-A-W [SURFACE WHITE]



**END CAP RECESSED:**

X-HV-CAP-L-B [RECESSED BLACK]  
 X-HV-CAP-L-W [RECESSED WHITE]



**FEED:**

X-HV-RFEED-B [BLACK RIGHT]  
 X-HV-RFEED-W [WHITE RIGHT]  
 X-HV-LFEED-B [BLACK LEFT]  
 X-HV-LFEED-W [WHITE LEFT]



**STRAIGHT CONNECTOR:**

X-HV-ICOUPLER-B [BLACK]  
 X-HV-ICOUPLER-W [WHITE]



**CORNER CONNECTOR:**

X-HV-LICOUPLER-B [BLACK, INTERNAL EARTH]  
 X-HV-LICOUPLER-W [WHITE, INTERNAL EARTH]  
 X-HV-LECOUPLER-B [BLACK, EXTERNAL EARTH]  
 X-HV-LECOUPLER-W [WHITE, EXTERNAL EARTH]



**FLEX CONNECTOR:**

X-HV-FLEXCOUPLER-B [BLACK]  
 X-HV-FLEXCOUPLER-W [WHITE]



**SUSPENSION SET:**

X-HV-SUSPENSION-1.5M-B [BLACK, LENGTH 1,5M]  
 X-HV-SUSPENSION-1.5M-W [WHITE, LENGTH 1,5M]  
 X-HV-SUSPENSION-4M-B [BLACK, LENGTH 4M]  
 X-HV-SUSPENSION-4M-W [WHITE, LENGTH 4M]