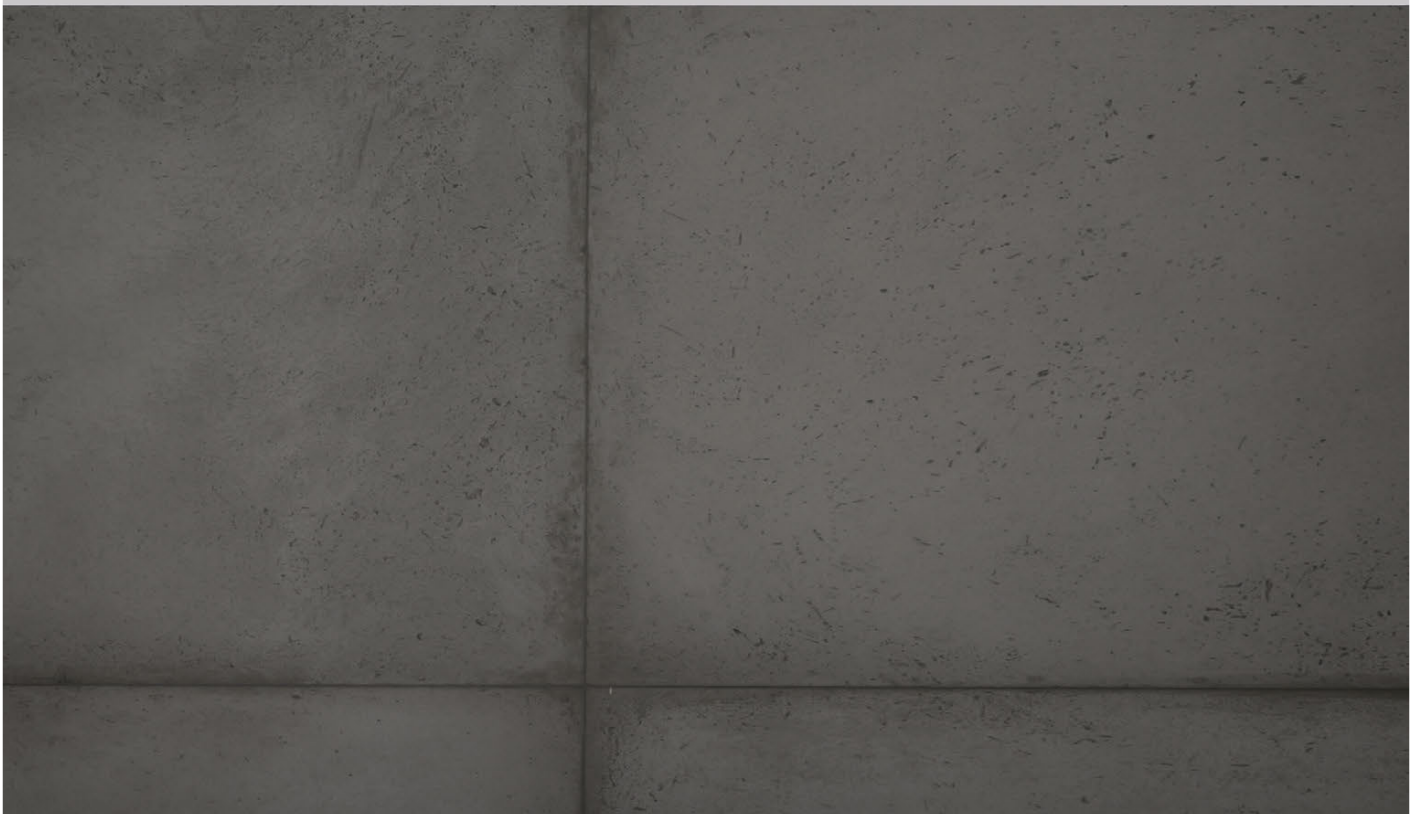
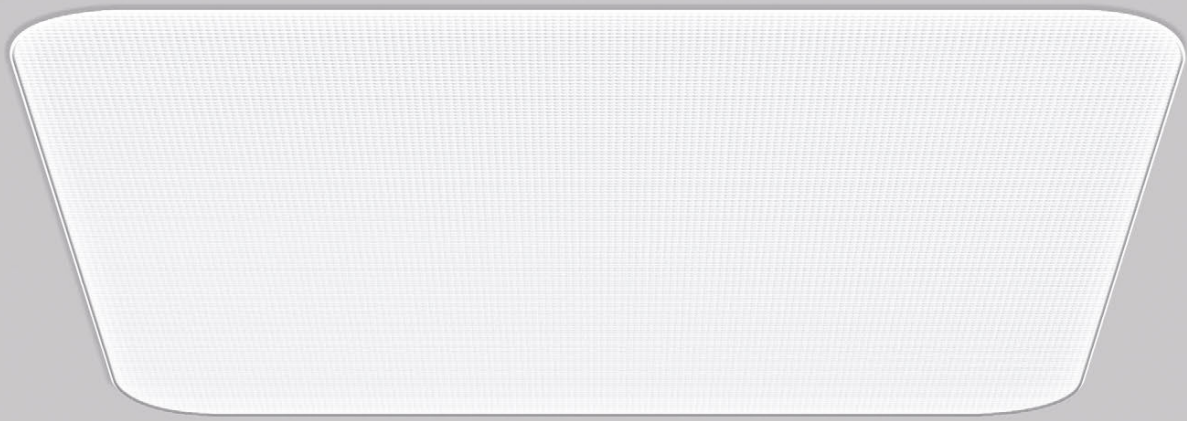


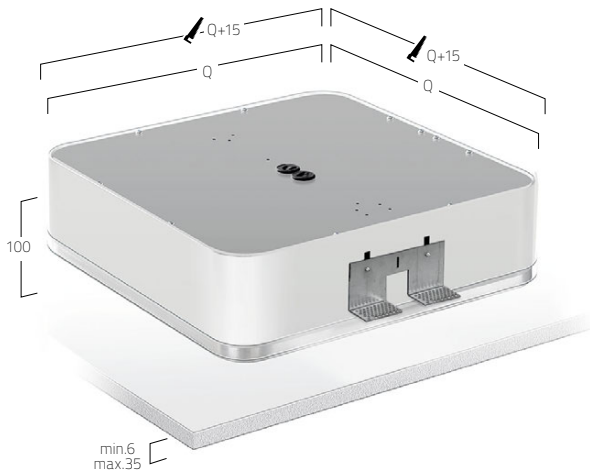
CALEO
RECESSED | M2



DE LED-Einbauleuchte für rahmenlose Montage in Gipskartondecken. Rein direktstrahlend. Leuchtenkörper aus Aluminium. Oberfläche weiß. Microprismenoptik mit optimierter Blendungsbegrenzung speziell für Office-Anwendungen. Satinierter Opaldiffusor für Allgemeinbeleuchtung. Konverter in Leuchtgehäuse integriert, wahlweise einfach schaltbar oder stufenlos dimmbar (1-10V, DALI, Touch-Dim, Casambi). Farbtemperaturen 2200K, 2700K, 3000K, 3500K, 4000K oder 6500K. Binning initial \leq MacAdam 3. Farbwiedergabe CRI>80 oder CRI>90. Befestigungsset inklusive.

EN Recessed mounted LED luminaire for frameless installation in plasterboard ceilings. Direct only light distribution. Luminaire body made of aluminium. Surface white. Microprismatic with optimized glare reduction especially for workplaces. Satin opal diffuser for general lighting. Converter integrated into luminaire housing, optionally switchable or dimmable (1-10V, DALI, Touch-Dim, Casambi). Colour temperatures 2200K, 2700K, 3000K, 3500K, 4000K or 6500K. Binning initial \leq MacAdam 3. Colour rendering CRI>80 or CRI>90. Mounting brackets included.

FR Luminaire LED encastré sans cadre pour plafonds en placoplâtre. Éclairage seulement direct. Corps du luminaire en aluminium. Surface blanc. Diffuseur microprismatique optimisé pour un éblouissement limité et adapté aux bureaux. Diffuseur opale satinée pour un éclairage général. Driver intégré dans le luminaire, au choix ON/OFF ou graduable (1-10V, DALI, Touch-Dim, Casambi). Température de couleur 2200K, 2700K, 3000K, 3500K, 4000K ou 6500K. Binning initial \leq MacAdam 3. Rendu de couleur CRI>80 ou CRI>90. Cadre de montage et kit de fixations inclus.

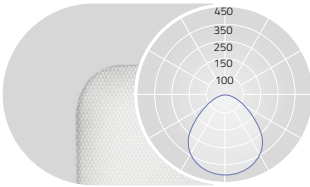


PRODUCT-CODE: **A M2 O W E - 8 30 M - Q340**

| | |
|----------------|--|
| PRODUCT FAMILY | - A: Caleo |
| TYPE | - M2: Direct |
| OPTICAL SYSTEM | - O: Opal, A: Microprismatic |
| SURFACE FINISH | - W: Snow White |
| CONTROL GEAR | - E: On/Off, L: DALI, D: 1-10V, H: Touch-Dim, C: Casambi |
| COLOUR REND. | - 8: CRI>80, 9: CRI>90, F: Full Spectrum |
| COLOUR TEMP. | - 22: 2200K, 27: 2700K, 30: 3000K, 35: 3500K, 40: 4000K, 65: 6500K |
| POWER | - M: Medium Power, H: High Power |
| SIZE | - Square Size in mm: Q340 Q420 Q612 |
| ON REQUEST | - Emergency Module, Radar Sensor |

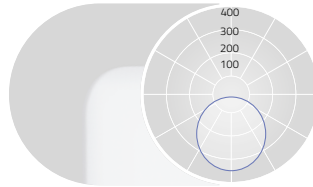


MICROPRISMATIC / DIRECT



UGR \leq 19 for Medium Power (X=4H, Y=8H, S=0.25H)
DIRECT: 100%

OPAL DIFFUSER / DIRECT



DIRECT: 100%

| Q mm | Lumen/Watt Medium Power | Lumen/Watt High Power |
|------|-------------------------|-----------------------|
| 340 | 1360lm/12W | 2010lm/18W |
| 420 | 2370lm/20W | 3450lm/29W |
| 612 | 5200lm/40W | 8500lm/65W |

| Q mm | Lumen/Watt Medium Power | Lumen/Watt High Power |
|------|-------------------------|-----------------------|
| 340 | 1400lm/12W | 2070lm/18W |
| 420 | 2440lm/20W | 3550lm/29W |
| 612 | 5360lm/40W | 8760lm/65W |

Lumen Values: Luminaire luminous flux at 4000K/CRI>80 / surface finished Snow White. Other configurations on request.