

RAGGIO 1

RAGGIO 2

RAGGIO 4

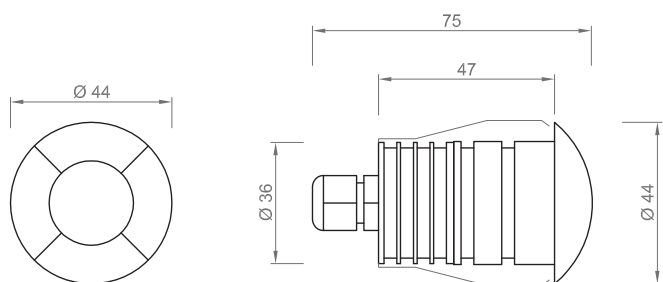


Apparecchio da incasso a led per applicazione da interno o esterno. Corpo in alluminio anodizzato o verniciato. Vetro di protezione in materiale plastico trasparente. Ghiera in alluminio, acciaio o bronzo con 1/2/4 aperture. Completo di clips per il fissaggio.

Led lighting fixtures for recessed installation, highly elegant, for interior and exterior installation. Body and ring in anodized or painted aluminium. Clear protection glass. Ring in aluminium, steel or bronze, with 1/2/4 holes for light diffusion. Steel fixing clips for recessed or wall mounting.

	RAGGIO 1 EN3777	RAGGIO 2 EN3776	RAGGIO 4 EN3775
LED Colour	White 3000K or 4000K	White 3000K or 4000K	White 3000K or 4000K
LED Number	1	1	1
TOTAL Power	1,2W	1,2W	1,2W
Input	350mA	350mA	350mA
Weight	0,1 kg	0,1 kg	0,1 kg
Insulation Class	III	III	III
IP Code	IP67	IP67	IP67
Dimensions	Ø 44x75 mm	Ø 44x75 mm	Ø 44x75 mm
Recessed dimensions	Ø 36 mm	Ø 36 mm	Ø 36 mm
Body finishing	AL, White, Stainless steel and Bronze		
Frame	Al anodized or stainless steel	Al anodized or stainless steel	Al anodized or stainless steel

Notes: Driver not included



UFO 180°



Apparecchio da incasso a led per applicazione da esterno. Corpo in alluminio anodizzato. Ghiera in alluminio con 1 apertura, a 180°. Completo o-ring per il fissaggio.

Led lighting luminaire for recessed installation, highly elegant, for interior and exterior installation. Body and ring in anodized or painted aluminium. Clear protection glass. Ring in aluminium with one opening 180° for light diffusion. Steel fixing clips for recessed or wall mounting.

	UFO 180	EN3801S
LED Colour	White 3000K or 4000K	White 3000K or 4000K
LED Number	2	2
TOTAL Power	2,4W	2,4W
Input	350mA	350mA
Weight	0,4 kg	0,4 kg
Insulation Class	III	III
IP Code	IP67	IP67
Dimensions	Ø 94x85 mm	Ø 94x85 mm
Recessed dimensions	Ø 70 mm	Ø 70 mm
Body finishing	AL anodized	
Frame	180° Al anodized	

Notes: Drivers not included

