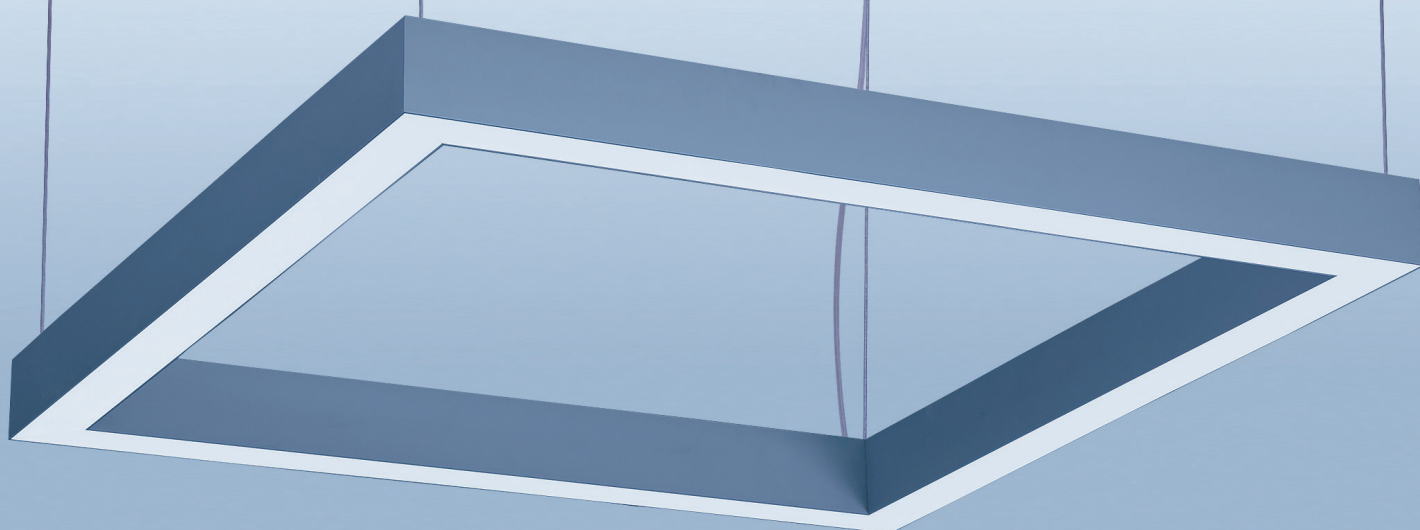


MATRIC READY SQUARE



DE

LED-Pendelleuchte, direkt-indirekt (-R4) oder rein direkt-strahlend (-G3). Speziell auf LED-Chips abgestimmter Opal-diffusor für max. Transmissionsgrad und perfekt homogene Auflösung der Lichtpunkte.

Leuchtenkörper aus Aluminium-Strangpress-Profil silbermatt natureloxiert. Optional weitere Farben (s. Oberflächenübersicht).

Zwei Lichtkammern (-R4) wahlweise getrennt schaltbar oder zusammen dimmbar (1-10V, DALI, Touch-Dim). Optional getrennt dimmbar via DALI bzw. Touch-dim. Werkseitige Konverterprogrammierung ermöglicht unterschiedliche Lichtstromoptionen.

Standard LED-Farbtemperatur 3000K und 4000K. Auf Wunsch 2200K, 2700K, 3500K, 5000K, 6500K. Enge Farbtoleranz MacAdam 3. Farbwiedergabe $R_a \geq 80$, auf Anfrage $R_a > 90$ möglich.

Stufenlos höhenverstellbare 4-Seilabhängung mit transparent ummantelter Zuleitung und Baldachin silber. Optimierte Montage durch Lieferung des Systems in einem Stück.

Lichtstromrückgang auf 80% des Ursprungswertes bei 50000h (L80B10 bei 25°C und max. Medium-Power). 5 Jahre Garantie auf LED-Module und LED-Betriebsgeräte.

Beachten Sie die Übersicht `optionale Ausführungen`

EN

LED pendant luminaire direct-indirect (-R4) or direct only (-G3). Especially adapted to LED-chip the opal diffuser made of frosted methacrylate ensures enhanced light transmission and perfect uniform illumination.

Luminaire body made of aluminium-profile. Matt silver anodised. On request extensive range of alternative colours (see overview).

Two light-chambers (-R4) separately switched or together dimmed (1-10V, DALI, Touch-Dim). Optional: separately dimmed via DALI / Touch-Dim. Factory-set drivers enable different output levels.

Standard LED colour temperature 3000K and 4000K. On request 2200K, 2700K, 3500K, 5000K, 6500K. MacAdam 3 step binning. Colour rendering $CRI \geq 80$, $CRI > 90$ on request.

Height adjustable 4-cord suspension for parallel installation with transparent power supply cable and ceiling rose silver. Optimized installation due to delivery in one piece.

80% of initial output for 50000 operating hours (L80B10 at 25°C and max. Medium-Power). 5 year warranty on all LED boards and LED drivers.

Refer to "options" overview

FR

Luminaire LED suspendu, éclairage direct et indirect (-R4) ou seulement direct (-G3). Spécialement adapté aux puces LED. Diffuseur opale pour un maximum de luminosité et une diffusion homogène des points lumineux.

Corps du luminaire en aluminium extrudé, gris mat anodisé. Couleurs supplémentaires en option (voir annexe).

Deux compartiments lumineux pour commande individuelle de l'éclairage direct et indirect - commutable séparément, graduable séparément via système DALI / Touch DIM ou graduable en combiné 1-10V. Programmation en usine offrant différentes options de flux lumineux.

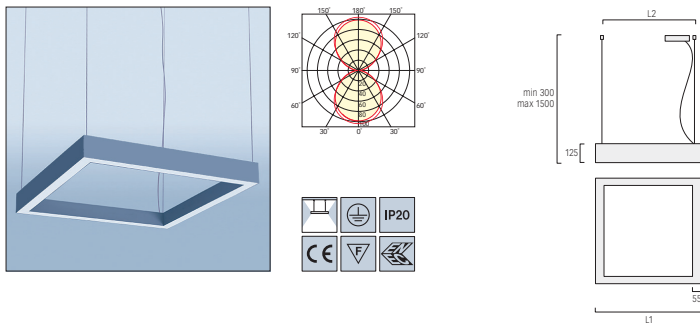
Température de couleur LED standard 3000K ou 4000K. Sur demande: 2200K, 2700K, 3500K, 5000K, 6500K (MacAdam 3). Rendu de couleur $IRC \geq 80$, sur demande $IRC > 90$.

4 câbles de suspension réglables en hauteur avec câble d'alimentation transparent et patère saillie grise. Optimisation du montage par la livraison en un seul morceau.

50 000 heures de fonctionnement avec une utilisation à 80% de la puissance (L80B10 à 25°C et max. Medium-Power). 5 ans de garantie sur tous les modules LED et convertisseurs LED.

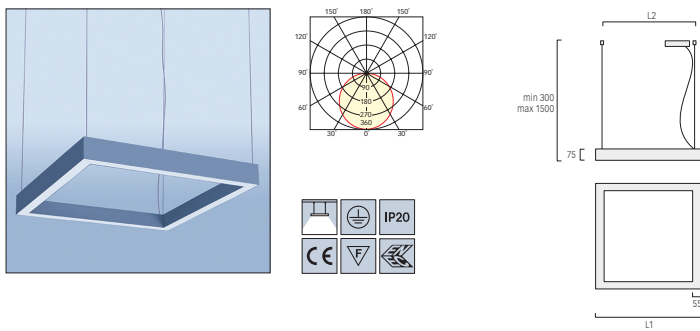
Voir les différentes options

MATRIC READY SQUARE-R4 / DIRECT-INDIRECT / OPAL



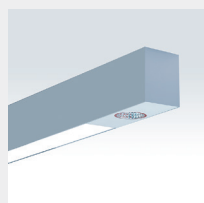
L1	L2	LUMEN/WATT	CODE	KG
LED - LOW POWER				
360	305	3748lm/33W*	LR40EG-###E-Q360-KS	9,5
650	595	7610lm/64W*	LR40EG-###E-Q650-KS	12,2
940	885	11472lm/96W*	LR40EG-###E-Q940-KS	14,2
1230	1175	15334lm/127W*	LR40EG-###E-Q1230-KS	17,1
LED - MEDIUM POWER				
360	305	5176lm/47W*	LR40EG-###M-Q360-KS	9,5
650	595	10513lm/92W*	LR40EG-###M-Q650-KS	12,2
940	885	15850lm/138W*	LR40EG-###M-Q940-KS	14,2
1230	1175	21187lm/183W*	LR40EG-###M-Q1230-KS	17,1
LED - HIGH POWER				
360	305	7346lm/70W*	LR40EG-###H-Q360-KS	9,5
650	595	14912lm/139W*	LR40EG-###H-Q650-KS	12,2
940	885	22479lm/208W*	LR40EG-###H-Q940-KS	14,2
1230	1175	30045lm/278W*	LR40EG-###H-Q1230-KS	17,1
CONTROL			G: NON DIMMABLE, D: DIM 1-10V, L: DIM DALI, H: TOUCH-DIM	
LED COLOUR TEMPERATURE ###			830: 3000K, 840: 4000K	

MATRIC READY SQUARE-G3 / DIRECT / OPAL

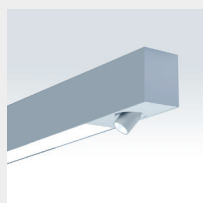


L1	L2	LUMEN/WATT	CODE	KG
LED - LOW POWER				
360	305	2488lm/22W*	LG30EE-###E-Q360-KS	7,5
650	595	4976lm/40W*	LG30EE-###E-Q650-KS	10,2
940	885	7465lm/59W*	LG30EE-###E-Q940-KS	12,2
1230	1175	9953lm/77W*	LG30EE-###E-Q1230-KS	15,1
LED - MEDIUM POWER				
360	305	3408lm/30W*	LG30EE-###M-Q360-KS	7,5
650	595	6816lm/57W*	LG30EE-###M-Q650-KS	10,2
940	885	10225lm/83W*	LG30EE-###M-Q940-KS	12,2
1230	1175	13633lm/110W*	LG30EE-###M-Q1230-KS	15,1
LED - HIGH POWER				
360	305	4924lm/45W*	LG30EE-###H-Q360-KS	7,5
650	595	9849lm/87W*	LG30EE-###H-Q650-KS	10,2
940	885	14773lm/130W*	LG30EE-###H-Q940-KS	12,2
1230	1175	19698lm/172W*	LG30EE-###H-Q1230-KS	15,1
CONTROL			E: NON DIMMABLE, D: DIM 1-10V, L: DIM DALI, H: TOUCH-DIM	
LED COLOUR TEMPERATURE ###			830: 3000K, 840: 4000K	

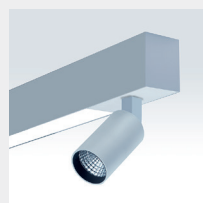
OPTIONAL



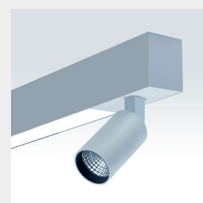
SPOTLIGHT TYPE: MR
MAX. 800LM



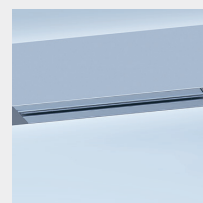
SPOTLIGHT TYPE: AC
MAX. 500LM



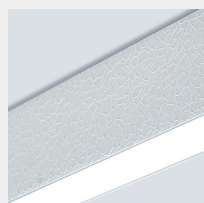
SPOTLIGHT TYPE: RX3
MAX. 1300LM



SPOTLIGHT TYPE: RX5
MAX. 4000LM



3-PHASE TRACK



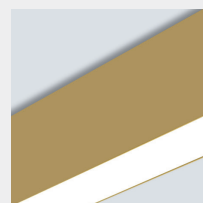
WHITE KROKO



SPARKLING ANTHRACITE



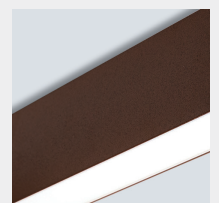
BLACK RAVEN



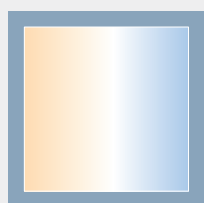
MAJESTIC GOLD



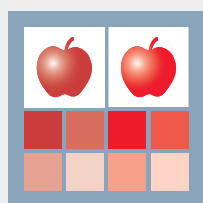
COZY COPPER



STALWART RUST



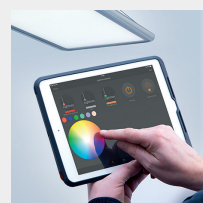
ALTERNATIVE COLOUR TEMPERATURES:
2200K/ 3500K/ 6500K



LEDS WITH HIGHER CRI
Ra>90



FURTHER SELECTED SURFACE DESIGNS:
SEE PAGE 15



BLUETOOTH MODULE FOR WIRELESS CONTROL



EMERGENCY MODULE WITH 3 HOUR BATTERY



MULTISENSOR FOR DAYLIGHT AND PRESENCE CONTROL